

Padlocks

FEATURES	Medeco ³	BiLevel	Medeco X4	Logic	Medeco XT
System Series body accepts knob style cylinders	●	●	●	●	●
System Series body accepts large format interchangeable cores	●	●		●	
System Series body accepts 6 or 7 Pin small format interchangeable cores			●		●
UL437 Listing & BHMA Certification on cylinder for high security	●				
Easily integrated into master key systems for key security and convenience	●	●	●		
Patented key control to protect against unauthorized duplication	●	●	●		
Non-key retaining (NKR) and key retaining (KR) models available.	●	●	●	●	●

Medeco³ Premium High Security

For effective mechanical protection against most forms of attack as well as protection against unauthorized duplicate keys, Medeco³ cylinders are recommended. Security features including hardened steel components, pins that must be elevated, rotated, and interact with both a sidebar and a slider, and additional pick resistant features make Medeco³ the cylinder of choice to protect people, property and information.

Medeco³ BiLevel Patented Key Control

Medeco³ BiLevel cylinders may be incorporated into a master key system with Medeco³ high security, offering protection against all types of attack where needed, and patented key control cylinders for areas requiring less protection. BiLevel cylinders offer patented control against unauthorized duplication of keys without the additional security features protecting against force or surreptitious attack.

Medeco X4 Patented Key Control

Medeco X4 cylinders offer patented control against unauthorized duplication of keys without the additional security features protecting against force or surreptitious attack.

Loss & Liability Control

Many of the cylinders in this section are also available with an eCylinder Loss & Liability Control Solution. See the eCylinder Section for more details.

How to Order:

<p>1</p> <p>54-51500 base part #</p> <p>Refer to pages 142-153 for descriptions and technical specifications to find the corresponding base part number.</p>	<p>2</p> <p>- 05 - finish</p> <p>Refer to the inside back cover of this catalog for finish options. Include the corresponding two digit finish number.</p> <p>Upcharge for split finish.</p>	<p>3</p> <p>LT - keyway</p> <p>Insert keyway if known or contact CS for help.</p>	<p>4</p> <p>S - pinning</p> <table border="1"> <tr> <td> <p>S = Sub-assembled (Uncombined) No additional information needed</p> </td> <td> <p>P = Pinned (Combined) Keyed alike (KA) Keyed different (KD) 2 keys per cylinder</p> </td> <td> <p>M = Master Keyed Provide specific pinning or contact Customer Service for support Must specify quantity for keys.</p> </td> </tr> <tr> <td colspan="3"> <p>Captive Deadbolt 1 change key and 1 thumbturn key</p> </td> </tr> </table>	<p>S = Sub-assembled (Uncombined) No additional information needed</p>	<p>P = Pinned (Combined) Keyed alike (KA) Keyed different (KD) 2 keys per cylinder</p>	<p>M = Master Keyed Provide specific pinning or contact Customer Service for support Must specify quantity for keys.</p>	<p>Captive Deadbolt 1 change key and 1 thumbturn key</p>		
<p>S = Sub-assembled (Uncombined) No additional information needed</p>	<p>P = Pinned (Combined) Keyed alike (KA) Keyed different (KD) 2 keys per cylinder</p>	<p>M = Master Keyed Provide specific pinning or contact Customer Service for support Must specify quantity for keys.</p>							
<p>Captive Deadbolt 1 change key and 1 thumbturn key</p>									

BUILD A SYSTEM SERIES PADLOCK BASE PART

54 X XXX X X X - XXX - XX - XX

<p>Prefix</p>		<p>Cylinder Type</p> <ul style="list-style-type: none"> - = Original T = Medeco³ W = Biaxial J = Medeco³ BiLevel C = Medeco Logic N = Medeco X4 G = Medeco XT K = Medeco KM 		<p>Standard Options</p> <ul style="list-style-type: none"> Blank = None T = Thick Head (SFIC Only) 		<p>Keyway</p>
<p>Shackle (Diameter), Feature, Clearance</p> <ul style="list-style-type: none"> 315 = 5/16" Diameter, Weather, 1 1/8" SFIC 31F = 5/16" Diameter, Weather, 2 3/8" SFIC 325 = 5/16" Diameter, Shrouded, 3/4" SFIC 335 = 5/16" Diameter, Weather, 1 1/8" SFIC 7 Pin 33F = 5/16" Diameter, Weather, 2 3/8" SFIC 7 Pin 345 = 5/16" Diameter, Shrouded, 3/4" SFIC 7 Pin 415 = 7/16" Diameter, Weather, 1 3/8" SFIC 41F = 7/16" Diameter, Weather, 1 7/8" SFIC 425 = 7/16" Diameter, Shrouded, 3/4" SFIC 435 = 7/16" Diameter, Weather, 1 3/8" SFIC 7 Pin 43F = 7/16" Diameter, Weather, 1 7/8" SFIC 7 Pin 445 = 7/16" Diameter, Shrouded, 3/4" SFIC 7 Pin 515 = 5/16" Diameter, Weather, 1 1/8" KIK 51F = 5/16" Diameter, Weather, 2 3/8" KIK 525 = 5/16" Diameter, Shrouded, 3/4" KIK 615 = 5/16" Diameter, Weather, 1 1/8" SLFIC 61F = 5/16" Diameter, Weather, 2 3/8" LFIC 625 = 5/16" Diameter, Shrouded, 3/4" LFIC 715 = 7/16" Diameter, Weather, 1 3/8" KIK 71F = 7/16" Diameter, Weather, 1 7/8" KIK 725 = 7/16" Diameter, Shrouded, 3/4" KIK 815 = 7/16" Diameter, Weather, 1 3/8" LFIC 81F = 7/16" Diameter, Weather, 1 7/8" LFIC 825 = 7/16" Diameter, Shrouded, 3/4" LFIC 		<p>Shackle Material</p> <ul style="list-style-type: none"> 0 = Boron Alloy Steel 1 = Stainless Steel 		<p>Key Function</p> <ul style="list-style-type: none"> 0 = Non-Key Retaining K = Less Cylinder (Key Retaining) L = Less Cylinder (Non-Key Retaining) R = Key Retaining 		<p>Finish</p>

System Series Padlocks

The Medeco® System Series padlock offers a high security solution for a multitude of applications and are available in two distinctive body styles, an indoor/outdoor weather resistant design or with a shrouded shackle. Both models utilize a boron alloy steel shackle which provides protection to resist cutting and increased tensile strength to resist pulling attacks. The boron alloy steel also ensures that the shackle has an exceptional degree of ductility and is not brittle. The cylinder itself uses hardened, stainless steel inserts to provide the ultimate defense against drilling, pulling and other forms of vandal attack. Patented key programs prevent the unauthorized duplication of keys and maintain system integrity. Medeco's new premium high security padlocks can be keyed alike, keyed differently, or masterkeyed with existing door hardware systems. The Medeco³ unique design provides triple locking action, making the locks virtually pick proof. All Medeco³ keys and locks are protected under patent, trademark, and copyright laws. Medeco³ keys may only be duplicated by Medeco® or by a Medeco® authorized sales outlet, and only at your request.



Benefits:

- The shrouded shackle design provides extra shackle protection against cutting attacks.
- Hardened stainless steel inserts inside the cylinder provide the ultimate defense against drilling and other forms of physical attack.
- Unique elevating and rotating tumbler pin system is virtually pick proof.
- All Medeco® cylinders are constructed of durable machined brass components, designed to last the life of your equipment.
- Patented Medeco³ keys may only be duplicated by Medeco® or an authorized Medeco® service outlet, and only at your request.
- Boron alloy steel shackle which protects against cutting and pulling attacks.
- Locks can be keyed alike, keyed different, or master keyed depending on your specific needs.
- Available in a variety of different shackle lengths.

Applications:

The Medeco® new premium high security padlocks can be used in a variety of different indoor or outdoor applications where high security and key control are a primary concern.

Technical Features:

- Available with either a 5/16 inch or a 7/16 inch shackle diameter.
- The Medeco® new premium high security padlocks are available as key retaining or non-key retaining.
- Extended shackles available for Indoor/Outdoor padlocks only.

Warranty:

Warranted for two (2) years against manufacturer's defects. See the Medeco® limited warranty for full details.

Finishes:

The padlock comes in a standard black body cover and the cylinders are furnished in the satin brass finish.

Available Key Technologies:

Mechanical:

- Medeco³
- Medeco³ BiLevel
- Medeco X4

eCylinder:

- Medeco³ Logic
- Medeco Logic
- Medeco XT

Indoor/Outdoor Padlock, 5/16" Shackle -KIK

Description	Part Number	Medeco ³	BiLevel	Medeco X4	eCylinder
Indoor/Outdoor Padlock, Non-Key Retaining, 1 1/8" Shackle Clearance, With Cylinder	54*51500 (P)				●
	54*51500 (S)				
Indoor/Outdoor Padlock, Key Retaining, 1 1/8" Shackle Clearance, With Cylinder	54*515R0 (P)				●
	54*515R0 (S)				
Indoor/Outdoor Padlock, Non-Key Retaining, 2 3/8" Shackle Clearance, With Cylinder	54*51F00 (P)				●
	54*51F00 (S)				
Indoor/Outdoor Padlock, Key Retaining, 2 3/8" Shackle Clearance, With Cylinder	54*51FR0 (P)				●
	54*51FR0 (S)				
Indoor/Outdoor Padlock, Key Retaining, 1 1/8" Shackle Clearance, Less Cylinder	54-515K0	\$38.00			
Indoor/Outdoor Padlock, Non-Key Retaining, 1 1/8" Shackle Clearance, Less Cylinder	54-515L0	\$38.00			
Indoor/Outdoor Padlock, Key Retaining, 2 3/8" Shackle Clearance, Less Cylinder	54-51FK0	\$41.00			
Indoor/Outdoor Padlock, Non-Key Retaining, 2 3/8" Shackle Clearance, Less Cylinder	54-51FL0	\$41.00			

Indoor/Outdoor Padlock, 5/16" Shackle -6 Pin LFIC

Description	Part Number	Medeco ³	BiLevel	Medeco X4	eCylinder
Indoor/Outdoor Padlock, Non-Key Retaining, 1 1/8" Shackle Clearance, With Cylinder	54*61500 (P)				
	54*61500 (S)				
Indoor/Outdoor Padlock, Key Retaining, 1 1/8" Shackle Clearance, With Cylinder	54*615R0 (P)				
	54*615R0 (S)				
Indoor/Outdoor Padlock, Non-Key Retaining, 2 3/8" Shackle Clearance, With Cylinder	54*61F00 (P)				
	54*61F00 (S)				
Indoor/Outdoor Padlock, Key Retaining, 2 3/8" Shackle Clearance, With Cylinder	54*61FR0 (P)				
	54*61FR0 (S)				
Indoor/Outdoor Padlock, Key Retaining, 1 1/8" Shackle Clearance, Less Cylinder	54-615K0				
Indoor/Outdoor Padlock, Non-Key Retaining, 1 1/8" Shackle Clearance, Less Cylinder	54-615L0	\$40.00			
Indoor/Outdoor Padlock, Key Retaining, 2 3/8" Shackle Clearance, Less Cylinder	54-61FK0				
Indoor/Outdoor Padlock, Non-Key Retaining, 2 3/8" Shackle Clearance, Less Cylinder	54-61FL0				

**Refer to the eCylinder section for more detail on specific technologies available and pricing. The * in the part number is replaced with:
T = Medeco³, S = Medeco³ Logic, J = Medeco³ BiLevel, W = Biaxial, V = Medeco Biaxial Logic, K = Medeco KM, N = Medeco X4, C = Medeco Logic,
“-” = Original, Z = Medeco Original KW Logic, G = Medeco XT ***See key section for surcharges for custom coined cut keys or special stamping requirements.
Note: (P) refers to **Pinned** and **(S)** to **Sub-Pinned** at the end of each part string in the price book.

Indoor/Outdoor Padlock, 5/16" Shackle -6 Pin SFIC

Description	Part Number	Medeco ³	BiLevel	Medeco X4	eCylinder
Indoor/Outdoor Padlock, Non-Key Retaining, 1 1/8" Shackle Clearance, With Cylinder	54*31500 (P)				
	54*31500 (S)				
Indoor/Outdoor Padlock, Key Retaining, 1 1/8" Shackle Clearance, With Cylinder	54*315R0 (P)				
	54*315R0 (S)				
Indoor/Outdoor Padlock, Non-Key Retaining, 2 3/8" Shackle Clearance, With Cylinder	54*31F00 (P)				
	54*31F00 (S)				
Indoor/Outdoor Padlock, Key Retaining, 2 3/8" Shackle Clearance, With Cylinder	54*31FR0 (P)				
	54*31FR0 (S)				

Indoor/Outdoor Padlock, 5/16" Shackle -7 Pin SFIC

Description	Part Number	Medeco ³	BiLevel	Medeco X4	eCylinder
Indoor/Outdoor Padlock, Non-Key Retaining, 1 1/8" Shackle Clearance, With Cylinder	54*33500 (P)				
	54*33500 (S)				
Indoor/Outdoor Padlock, Key Retaining, 1 1/8" Shackle Clearance, With Cylinder	54*335R0 (P)				
	54*335R0 (S)				
Indoor/Outdoor Padlock, Non-Key Retaining, 2 3/8" Shackle Clearance, With Cylinder	54*33F00 (P)				
	54*33F00 (S)				
Indoor/Outdoor Padlock, Key Retaining, 2 3/8" Shackle Clearance, With Cylinder	54*33FR0 (P)				
	54*33FR0 (S)				

Indoor/Outdoor Padlock, 5/16" Shackle -Less SFIC

Description	Part Number
Indoor/Outdoor Padlock, Key Retaining, 1 1/8" Shackle Clearance, Less Cylinder	54-315K0
Indoor/Outdoor Padlock, Non-Key Retaining, 1 1/8" Shackle Clearance, Less Cylinder	54-315L0
Indoor/Outdoor Padlock, Key Retaining, 2 3/8" Shackle Clearance, Less Cylinder	54-31FK0
Indoor/Outdoor Padlock, Non-Key Retaining, 2 3/8" Shackle Clearance, Less Cylinder	54-31FL0

**Refer to the eCylinder section for more detail on specific technologies available and pricing. The * in the part number is replaced with:
T = Medeco³, S = Medeco³ Logic, J = Medeco³ BiLevel, W = Biaxial, V = Medeco Biaxial Logic, K = Medeco KM, N = Medeco X4, C = Medeco Logic,
“-” = Original, Z = Medeco Original KW Logic, G = Medeco XT ***See key section for surcharges for custom coined cut keys or special stamping requirements.
Note: (P) refers to **Pinned** and **(S)** to **Sub-Pinned** at the end of each part string in the price book.

Indoor/Outdoor Padlock, 7/16" Shackle -KIK

Description	Part Number	Medeco ³	BiLevel	Medeco X4	eCylinder
Indoor/Outdoor Padlock, Non-Key Retaining, 1 3/8" Shackle Clearance, With Cylinder	54*71500 (P)				●
	54*71500 (S)				
Indoor/Outdoor Padlock, Key Retaining, 1 3/8" Shackle Clearance, With Cylinder	54*715R0 (P)				●
	54*715R0 (S)				
Indoor/Outdoor Padlock, Non-Key Retaining, 1 7/8" Shackle Clearance, With Cylinder	54*71F00 (P)				●
	54*71F00 (S)				
Indoor/Outdoor Padlock, Key Retaining, 1 7/8" Shackle Clearance, With Cylinder	54*71FR0 (P)				●
	54*71FR0 (S)				
Indoor/Outdoor Padlock, Key Retaining, 1 3/8" Shackle Clearance, Less Cylinder	54-715K0				
Indoor/Outdoor Padlock, Non-Key Retaining, 1 3/8" Shackle Clearance, Less Cylinder	54-715L0				
Indoor/Outdoor Padlock, Key Retaining, 1 7/8" Shackle Clearance, Less Cylinder	54-71FK0				
Indoor/Outdoor Padlock, Non-Key Retaining, 1 7/8" Shackle Clearance, Less Cylinder	54-71FL0				

Indoor/Outdoor Padlock, 7/16" Shackle -6 Pin LFIC

Description	Part Number	Medeco ³	BiLevel	Medeco X4	eCylinder
Indoor/Outdoor Padlock, Non-Key Retaining, 1 3/8" Shackle Clearance, With Cylinder	54*81500 (P)				
	54*81500 (S)				
Indoor/Outdoor Padlock, Key Retaining, 1 3/8" Shackle Clearance, With Cylinder	54*815R0 (P)				
	54*815R0 (S)				
Indoor/Outdoor Padlock, Non-Key Retaining, 1 7/8" Shackle Clearance, With Cylinder	54*81F00 (P)				
	54*81F00 (S)				
Indoor/Outdoor Padlock, Key Retaining, 1 7/8" Shackle Clearance, With Cylinder	54*81FR0 (P)				
	54*81FR0 (S)				
Indoor/Outdoor Padlock, Key Retaining, 1 3/8" Shackle Clearance, Less Cylinder	54-815K0				
Indoor/Outdoor Padlock, Non-Key Retaining, 1 3/8" Shackle Clearance, Less Cylinder	54-815L0				
Indoor/Outdoor Padlock, Key Retaining, 1 7/8" Shackle Clearance, Less Cylinder	54-81FK0	\$65.00			
Indoor/Outdoor Padlock, Non-Key Retaining, 1 7/8" Shackle Clearance, Less Cylinder	54-81FL0				

**Refer to the eCylinder section for more detail on specific technologies available and pricing. The * in the part number is replaced with:
T = Medeco³, S = Medeco³ Logic, J = Medeco³ BiLevel, W = Biaxial, V = Medeco Biaxial Logic, K = Medeco KM, N = Medeco X4, C = Medeco Logic,
“-” = Original, Z = Medeco Original KW Logic, G = Medeco XT ***See key section for surcharges for custom coined cut keys or special stamping requirements.
Note: (P) refers to **Pinned** and **(S)** to **Sub-Pinned** at the end of each part string in the price book.

Indoor/Outdoor Padlock, 7/16" Shackle - 6 Pin SFIC

Description	Part Number	Medeco ³	BiLevel	Medeco X4	eCylinder
Indoor/Outdoor Padlock, Non-Key Retaining, 1 3/8" Shackle Clearance, With Cylinder	54*41500 (P)				
	54*41500 (S)				
Indoor/Outdoor Padlock, Key Retaining, 1 3/8" Shackle Clearance, With Cylinder	54*415R0 (P)				
	54*415R0 (S)				
Indoor/Outdoor Padlock, Non-Key Retaining, 1 7/8" Shackle Clearance, With Cylinder	54*41F00 (P)				
	54*41F00 (S)				
Indoor/Outdoor Padlock, Key Retaining, 1 7/8" Shackle Clearance, With Cylinder	54*41FR0 (P)				
	54*41FR0 (S)				

Indoor/Outdoor Padlock, 7/16" Shackle - 7 Pin SFIC

Description	Part Number	Medeco ³	BiLevel	Medeco X4	eCylinder
Indoor/Outdoor Padlock, Non-Key Retaining, 1 3/8" Shackle Clearance With Cylinder	54*43500 (P)				
	54*43500 (S)				
Indoor/Outdoor Padlock, Key Retaining, 1 3/8" Shackle Clearance, With Cylinder	54*435R0 (P)				
	54*435R0 (S)				
Indoor/Outdoor Padlock, Non-Key Retaining, 1 7/8" Shackle Clearance, With Cylinder	54*43F00 (P)				
	54*43F00 (S)				
Indoor/Outdoor Padlock, Key Retaining, 1 7/8" Shackle Clearance, With Cylinder	54*43FR0 (P)				
	54*43FR0 (S)				

Indoor/Outdoor Padlock, 7/16" Shackle - Less SFIC

Description	Part Number	Medeco ³	BiLevel	Medeco X4	eCylinder
Indoor/Outdoor Padlock, Key Retaining, 1 3/8" Shackle Clearance, Less Cylinder	54-415K0				
Indoor/Outdoor Padlock, Non-Key Retaining, 1 3/8" Shackle Clearance, Less Cylinder	54-415L0				
Indoor/Outdoor Padlock, Key Retaining, 1 7/8" Shackle Clearance, Less Cylinder	54-41FK0				
Indoor/Outdoor Padlock, Non-Key Retaining, 1 7/8" Shackle Clearance, Less Cylinder	54-41FL0			\$65.00	

Shrouded Padlock, 5/16" Shackle - KIK

Description	Part Number	Medeco ³	BiLevel	Medeco X4	eCylinder
Shrouded Padlock, Non-Key Retaining, 3/4" Shackle Clearance, With Cylinder	54*52500 (P)				
	54*52500 (S)				
Shrouded Padlock, Key Retaining, 3/4" Shackle Clearance, With Cylinder	54*525R0 (P)				
	54*525R0 (S)				
Shrouded Padlock, Key Retaining, 3/4" Shackle Clearance, Less Cylinder	54-525K0	\$55.00			
Shrouded Padlock, Non-Key Retaining, 3/4" Shackle Clearance, Less Cylinder	54-525L0	\$55.00			

**Refer to the eCylinder section for more detail on specific technologies available and pricing. The * in the part number is replaced with:
T = Medeco³, S = Medeco³ Logic, J = Medeco³ BiLevel, W = Biaxial, V = Medeco Biaxial Logic, K = Medeco KM, N = Medeco X4, C = Medeco Logic,
“-” = Original, Z = Medeco Original KW Logic, G = Medeco XT ***See key section for surcharges for custom coined cut keys or special stamping requirements.
Note: (P) refers to **Pinned** and **(S)** to **Sub-Pinned** at the end of each part string in the price book.

Shrouded Padlock, 5/16" Shackle - 6 Pin LFIC

Description	Part Number	Medeco ³	BiLevel	Medeco X4	eCylinder
Shrouded Padlock, Non-Key Retaining, 3/4" Shackle Clearance, With Cylinder	54*62500 (P)				
	54*62500 (S)				
Shrouded Padlock, Key Retaining, 3/4" Shackle Clearance, With Cylinder	54*625R0 (P)				
	54*625R0 (S)				
Shrouded Padlock, Key Retaining, 3/4" Shackle Clearance, Less Cylinder	54-625K0				
Shrouded Padlock, Non-Key Retaining, 3/4" Shackle Clearance, Less Cylinder	54-625L0	\$58.00			

Shrouded Padlock, 5/16" Shackle - 6 Pin SFIC

Description	Part Number	Medeco ³	BiLevel	Medeco X4	eCylinder
Shrouded Padlock, Non-Key Retaining, 3/4" Shackle Clearance, With Cylinder	54*32500 (P)				
	54*32500 (S)				
Shrouded Padlock, Key Retaining, 3/4" Shackle Clearance, With Cylinder	54*325R0 (P)				
	54*325R0 (S)				

Shrouded Padlock, 5/16" Shackle - 7 Pin SFIC

Description	Part Number	Medeco ³	BiLevel	Medeco X4	eCylinder
Shrouded Padlock, Non-Key Retaining, 3/4" Shackle Clearance, With Cylinder	54*34500 (P)				
	54*34500 (S)				
Shrouded Padlock, Key Retaining, 3/4" Shackle Clearance, With Cylinder	54*345R0 (P)				
	54*345R0 (S)				

Shrouded Padlock, 5/16" Shackle - Less SFIC

Description	Part Number	Medeco ³	BiLevel	Medeco X4	eCylinder
Shrouded Padlock, Key Retaining, 3/4" Shackle Clearance, Less Cylinder	54-325K0				
Shrouded Padlock, Non-Key Retaining, 3/4" Shackle Clearance, Less Cylinder	54-325L0	\$58.00			

**Refer to the eCylinder section for more detail on specific technologies available and pricing. The * in the part number is replaced with:
T = Medeco³, S = Medeco³ Logic, J = Medeco³ BiLevel, W = Biaxial, V = Medeco Biaxial Logic, K = Medeco KM, N = Medeco X4, C = Medeco Logic,
“-” = Original, Z = Medeco Original KW Logic, G = Medeco XT ***See key section for surcharges for custom coined cut keys or special stamping requirements.
Note: (P) refers to **Pinned** and **(S)** to **Sub-Pinned** at the end of each part string in the price book.

Shrouded Padlock, 7/16" Shackle - KIK

Description	Part Number	Medeco ³	BiLevel	Medeco X4	eCylinder
Shrouded Padlock, Non-Key Retaining, 3/4" Shackle Clearance, With Cylinder	54*72500 (P)				●
	54*72500 (S)				
Shrouded Padlock, Key Retaining, 3/4" Shackle Clearance, With Cylinder	54*725R0 (P)				●
	54*725R0 (S)				
Shrouded Padlock, Key Retaining, 3/4" Shackle Clearance, Less Cylinder	54-725K0				
Shrouded Padlock, Non-Key Retaining, 3/4" Shackle Clearance, Less Cylinder	54-725L0				

Shrouded Padlock, 7/16" Shackle - 6 Pin LFIC

Description	Part Number	Medeco ³	BiLevel	Medeco X4	eCylinder
Shrouded Padlock, Non-Key Retaining, 3/4" Shackle Clearance, With Cylinder	54*82500 (P)				
	54*82500 (S)				
Shrouded Padlock, Key Retaining, 3/4" Shackle Clearance, With Cylinder	54*825R0 (P)				
	54*825R0 (S)				
Shrouded Padlock, Key Retaining, 3/4" Shackle Clearance, Less Cylinder	54-825K0				
Shrouded Padlock, Non-Key Retaining, 3/4" Shackle Clearance, Less Cylinder	54-825L0				

Shrouded Padlock, 7/16" Shackle - 6 Pin SFIC

Description	Part Number	Medeco ³	BiLevel	Medeco X4	eCylinder
Shrouded Padlock, Non-Key Retaining, 3/4" Shackle Clearance, With Cylinder	54*42500 (P)				
	54*42500 (S)				
Shrouded Padlock, Key Retaining, 3/4" Shackle Clearance, With Cylinder	54*425R0 (P)				
	54*425R0 (S)				

Shrouded Padlock, 7/16" Shackle - 6 Pin SFIC

Description	Part Number	Medeco ³	BiLevel	Medeco X4	eCylinder
Shrouded Padlock, Non-Key Retaining, 3/4" Shackle Clearance, With Cylinder	54*44500 (P)				
	54*44500 (S)				
Shrouded Padlock, Key Retaining, 3/4" Shackle Clearance, With Cylinder	54*445R0 (P)				
	54*445R0 (S)				

**Refer to the eCylinder section for more detail on specific technologies available and pricing. The * in the part number is replaced with:
T = Medeco³, S = Medeco³ Logic, J = Medeco³ BiLevel, W = Biaxial, V = Medeco Biaxial Logic, K = Medeco KM, N = Medeco X4, C = Medeco Logic,
“-” = Original, Z = Medeco Original KW Logic, G = Medeco XT ***See key section for surcharges for custom coined cut keys or special stamping requirements.
Note: (P) refers to **Pinned** and **(S)** to **Sub-Pinned** at the end of each part string in the price book.

Shrouded Padlock, 7/16" Shackle - Less SFIC

Description	Part Number	Medeco ³	BiLevel	Medeco X4	eCylinder
Shrouded Padlock, Key Retaining, 3/4" Shackle Clearance, Less Cylinder	54-425K0				
Shrouded Padlock, Non-Key Retaining, 3/4" Shackle Clearance, Less Cylinder	54-425L0	\$85.00			

52 Series Padlock, 5/16" Shackle

Description	Part Number	Medeco ³	BiLevel	Medeco X4	eCylinder
1 1/8" Clearance, Boron Alloy Shackle	52*6201 (P)				
	52*6201 (S)				
2 3/8" Clearance, Boron Alloy Shackle	52*6301 (P)				
	52*6301 (S)				
1 1/8" Clearance, Boron Alloy Shackle, Less Cylinder	52-6200	\$66.90			
2 3/8" Clearance, Boron Alloy Shackle, Less Cylinder	52-6300	\$66.90			
1 1/8" Clearance, Stainless Steel Shackle	52*6211 (P)				
	52*6211 (S)				
2 3/8" Clearance, Stainless Steel Shackle	52*6311 (P)				
	52*6311 (S)				
1 1/8" Clearance, Stainless Steel Shackle, Less Cylinder	52-6210	\$66.90			
2 3/8" Clearance, Stainless Steel Shackle, Less Cylinder	52-6310	\$66.90			

*Padlock body is solid brass with 26 plated finish.

52 Series Padlock, 5/16" Shackle, Removable Core

Description	Part Number	Medeco ³	BiLevel	Medeco X4	eCylinder
1 1/8" Clearance, Boron Alloy Shackle, Removable Core, Less Cylinder	52-6202				
2 3/8" Clearance, Boron Alloy Shackle, Removable Core, Less Cylinder	52-6302				
1 1/8" Clearance, Stainless Steel Shackle, Removable Core, Less Cylinder	52-6212				
2 3/8" Clearance, Stainless Steel Shackle, Removable Core, Less Cylinder	52-6312				

Padlock body is solid brass with 26 plated finish

**Refer to the eCylinder section for more detail on specific technologies available and pricing. The * in the part number is replaced with:
 T = Medeco³, S = Medeco³ Logic, J = Medeco³ BiLevel, W = Biaxial, V = Medeco Biaxial Logic, K = Medeco KM, N = Medeco X4, C = Medeco Logic,
 "-" = Original, Z = Medeco Original KW Logic, G = Medeco XT ***See key section for surcharges for custom coined cut keys or special stamping requirements.
Note: (P) refers to **Pinned** and **(S)** to **Sub-Pinned** at the end of each part string in the price book.

52 Series Padlock, 7/16" Shackle

Description	Part Number	Medeco ³	BiLevel	Medeco X4	eCylinder
1 3/8" Clearance, Boron Alloy Shackle	52*6001 (P)				
	52*6001 (S)				
1 7/8" Clearance, Boron Alloy Shackle	52*6101 (P)				
	52*6101 (S)				
1 3/8" Clearance, Boron Alloy Shackle, Less Cylinder	52-6000	\$66.90			
1 7/8" Clearance, Boron Alloy Shackle, Less Cylinder	52-6100	\$66.90			
1 3/8" Clearance, Stainless Steel Shackle	52*6011 (P)				
	52*6011 (S)				
1 7/8" Clearance, Stainless Steel Shackle	52*6111 (P)				
	52*6111 (S)				
1 3/8" Clearance, Stainless Steel Shackle, Less Cylinder	52-6010	\$66.90			
1 7/8" Clearance, Stainless Steel Shackle, Less Cylinder	52-6110	\$66.90			

*52 Series Padlock body is solid brass with 26 plated finish.

52 Series Padlock, 7/16" Shackle, Removable Core

Description	Part Number	Medeco ³	BiLevel	Medeco X4	eCylinder
1 3/8" Clearance, Boron Alloy Shackle, Removable Core, Less Cylinder	52-6002	\$83.60			
1 7/8" Clearance, Boron Alloy Shackle, Removable Core, Less Cylinder	52-6102	\$83.60			
1 3/8" Clearance, Stainless Steel Shackle, Removable Core, Less Cylinder	52-6012	\$83.60			
1 7/8" Clearance, Stainless Steel Shackle, Removable Core, Less Cylinder	52-6112	\$83.60			

Padlock body is solid brass with 26 plated finish.

52 series Padlocks Cover Options: 00 = Standard, 01 = Case Cover, 10 = Dust Cover

**Refer to the eCylinder section for more detail on specific technologies available and pricing. The * in the part number is replaced with:
T = Medeco³, S = Medeco³ Logic, J = Medeco³ BiLevel, W = Biaxial, V = Medeco Biaxial Logic, K = Medeco KM, N = Medeco X4, C = Medeco Logic,
“-” = Original, Z = Medeco Original KW Logic, G = Medeco XT ***See key section for surcharges for custom coined cut keys or special stamping requirements.
Note: (P) refers to **Pinned** and **(S)** to **Sub-Pinned** at the end of each part string in the price book.

Padlock Cylinders

Description	Part Number	Medeco ³	BiLevel	Medeco X4	eCylinder
5 Pin Cylinder (6 pin Medeco X4) for Hockey Puck Style Padlock sold after 9/2004 (KIK style cylinder)	20*01600 (P)				
	20*01600 (S)				
6 Pin Cylinder for LFIC Medeco Padlock, for 54 Series Padlocks	32*0201 (P)				●
	32*0201 (S)				
6 Pin Cylinder for KIK Medeco Padlock, for 54 Series Padlocks	51*0600 (P)				●
	51*0600 (S)				
5 Pin Spring Bolt Cylinder (non-key retaining), for G8R Padlock	96*0357 (P)				
	96*0357 (S)				
5 Pin Deadbolt Cylinder (key retaining), for G8R Padlock	96*0358 (P)				
	96*0358 (S)				
Spacer for use with 5 Pin Cylinders, for G8R Padlock	CP-160691				
5 Pin cylinder (cam lock style) for 52-6 series padlocks	66-418XXX (P)				
	66-418XXX (S)				
4 Pin Removable plug for 52-6 padlocks	66-391XXX (P)				
	66-391XXX (S)				

eCylinder Padlock Cylinders

eCylinders are available for many of the padlocks. Please check the eCylinder section for specific part numbers and pricing.

**Refer to the eCylinder section for more detail on specific technologies available and pricing. The * in the part number is replaced with:
 T = Medeco³, S = Medeco³ Logic, J = Medeco³ BiLevel, W = Biaxial, V = Medeco Biaxial Logic, K = Medeco KM, N = Medeco X4, C = Medeco Logic,
 “-” = Original, Z = Medeco Original KW Logic, G = Medeco XT ***See key section for surcharges for custom coined cut keys or special stamping requirements.
Note: (P) refers to **Pinned** and **(S)** to **Sub-Pinned** at the end of each part string in the price book.

Components

Description	Part Number
Component Package for 54 Series Padlocks, NonKey Retaining. Includes CP-130510 Cylinder Extension/Actuator, Spring & Washer, CP-022030 Cylinder Retainer, CP-011511-000 Retainer Screw, CP-250140 Steel Ball Bearing	94-0199
Cylinder Retainer Sleeve (Fits over Cylinder Bible Chamber & holds cylinder in padlock body)	CP-022030
Retainer Screw, #6-32 UNC-2A x .312" length	CP-011511-000
Cylinder Extension/Actuator, Non Key Retaining, Spring & Washer for 54 Series Padlocks	CP-130510
Stainless Steel Ball Bearing for 54 Series Padlocks, .360" Diameter	CP-250140
Cylinder Extension/Actuator, Key Retaining, for 54 Series Padlocks	CP-200720

Shackles for Indoor/Outdoor Padlocks

Description	Boron Alloy Steel Part Number	Stainless Steel Part Number
Standard Shackle for 54-51 Indoor/Outdoor Padlock, 1-1/8" Shackle Clearance x 5/16" Diameter	CP-144120	CP-144180
Extra Length Shackle for 54-51 Indoor/Outdoor Padlock, 2-3/8" Shackle Clearance x 5/16" Diameter	CP-144130	CP-144190
Standard Shackle for 54-71 Indoor/Outdoor Padlock, 1-3/8" Shackle Clearance x 7/16" Diameter	CP-144150	CP-144210
Extra Length Shackle for 54-71 Indoor/Outdoor Padlock, 1-7/8" Shackle Clearance x 7/16" Diameter	CP-144160	CP-144220

Shackles for Shrouded Padlocks

Description	Boron Alloy Steel Part Number	Stainless Steel Part Number
Standard Shackle for 54-52 Shrouded Padlock, 3/4" Shackle Clearance x 5/16" Diameter	CP-144110	CP-144170
Standard Shackle for 54-72 Shrouded Padlock, 3/4" Shackle Clearance x 7/16" Diameter	CP-144140	CP-144200

Hockey Puck Padlocks

Medeco® offers a variety of High Security Padlocks that are designed to accept both mechanical and eCylinders. The Medeco® Hockey Puck style padlocks come with hardened, solid steel bodies, a shackle-less design for the highest level of protection against bolt cutter attacks, and patent protected key control. Every padlock cylinder is UL 437 Listed and can be keyed into any existing 10 series product. The Medeco³ unique design provides triple locking action, making the locks virtually pick proof. All Medeco³ keys and locks are protected under patent, trademark, and copyright laws. Medeco³ keys may only be duplicated by Medeco® or by a Medeco® authorized sales outlet, and only at your request.



Benefits:

- Hardened solid steel, black chrome plated body.
- Hardened stainless steel inserts inside the cylinder provide the ultimate defense against drilling and other forms of physical attack.
- Unique elevating and rotating tumbler pin system is virtually pick proof.
- All Medeco® cylinders are constructed of durable machined brass components, designed to last the life of your equipment.
- Patented Medeco³ keys may only be duplicated by Medeco® or an authorized Medeco® service outlet, and only at your request.
- Hockey Puck style padlocks are completely serviceable, and can be re-keyed in case of lost or stolen keys.
- Hockey Puck style padlocks can be keyed in with other 10 series products.
- Locks can be keyed alike, keyed different, or master keyed depending on your specific needs.
- Shackle-less design for the highest level of protection against bolt cutter attacks.

Applications:

Hockey Puck style padlocks can be used in a variety of different applications including vending, storage and transportation.

Technical Features:

- Hardened steel body.
- 5 pin, key-in-knob cylinder.
- Requires a key to relock.

Warranty:

Warranted for two (2) years against manufacturer's defects. See the Medeco® limited warranty for full details.

Available Key Technologies:

Mechanical:	eCylinder:
– Medeco ³	– Medeco XT
– Medeco ³ BiLevel*	
– Medeco X4*	

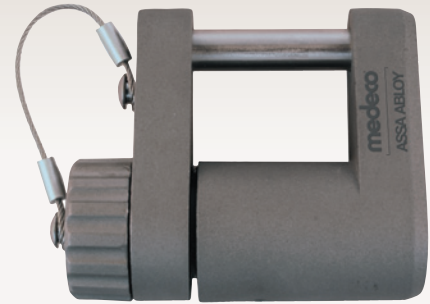
52-9 Series Hockey Puck Padlock

Description	Part Number	Medeco ³	BiLevel	Medeco X4	eCylinder
Hockey Puck Padlock, With 5 Pin High Security or 6 Pin Medeco X4 Cylinder	52*93000 (P)				
	52*93000 (S)				
Hockey Puck Padlock, Non-Key Retaining, Less Cylinder	52*930L0				

Hockey Puck uses unique cylinders and can be keyed to a door hardware key. Not available with LFIC or SFIC.

G8R Padlocks

Medeco® offers a variety of High Security Padlocks that are designed to accept both mechanical and eCylinders. With its tough, weather resistant construction, this is the padlock of choice for extreme environments such as trailers, cargo containers, and gates. The Medeco® G8R body is constructed of solid stainless steel. You can choose from either a stainless steel shackle for maximum corrosion resistance, or hardened steel to withstand severe physical attack. Each padlock includes a weather seal cap attached by a cable. The Medeco® G8R will accept either an eCylinder or mechanical t-handle cylinder. The mechanical cylinders provide the benefit of patented key control and pick resistance. The eCylinder adds sophisticated audit and control features transforming the G8R into a portable access control system for extreme environments.



Features:

- Sealed construction protects cylinders from water and road grime.
- Stainless steel body resists attack and corrosion.
- Shackles can be specified in stainless or hardened steel to fit your application.
- Padlock can house a Medeco® mechanical cylinder for key control and pick resistance, or an eCylinder for loss and liability control.

Applications:

- The G8R Series was designed for locking installations requiring weather resistance and strong physical security. Applications include:
 - Cargo containers
 - Trailer doors
 - Gates
 - Vending machines

Warranty:

Warranted for two (2) years against manufacturer's defects. See the Medeco® limited warranty for full details

Technical Information:

- 300 series, cast stainless steel body.
- Padlock is sold less cylinder. Compatible with Medeco® mechanical and NEXGEN electronic t-handle cylinders.
- Padlocks are shipped with a weather seal cap attached by a steel cable. A finish plate is included for applications that do not require the weather seal cap.

Available Key Technologies:

Mechanical:

- Medeco³

eCylinder:

- Medeco XT
- Medeco Logic
- Medeco Nexgen

G8R Series Padlock

Description	Part Number
G8R Weather-tight Padlock, 5/16" Stainless Steel Shackle, less pop-out cylinder	52-110040
G8R Weather-tight Padlock, 5/16" Hardened Steel Shackle, less pop-out cylinder	52-111040
G8R Weather-tight Padlock, 7/16" Stainless Steel Shackle, less pop-out cylinder	52-120040
G8R Weather-tight Padlock, 7/16" Hardened Steel Shackle, less pop-out cylinder	52-121040

G8R padlocks are sold less cylinder and use a cam lock style key with pop-out plug. Keys are charged separately for this style cylinder.